

AUSTRALIAWIDE PAYPHONES



**Telephone Hoods, Cabinets, Kiosks
and Special Environment Phones**

sales@australiawidepayphones.com.au

HOODS FOR INDUSTRY

For use in industrial or commercial premises where communication is important.

T400



PRODUCT INFO

The T400 is our most popular acoustic phone hood for industrial or other noisy locations. Having a medium density rotationally moulded outer shell, the hood is extremely robust. The interior is lined with rigid perforated PVC, the 25mm cavity being filled with acoustic foam. This combination of materials produce a hood with good acoustic qualities and can be easily cleaned.

The T400 Full Shelf version accommodates desk top phones, wall phones and smaller wall mounted payphones which can be fixed to the back of the hood. Larger wall mounted payphones are fixed to the wall below the cut out in the T400 Half Shelf version.

DIMENSIONS

Colour:	Grey
Dimensions:	H605mm W605mm D515mm
Half Shelf:	cut out 265mm wide
Noise Reduction:	up to -16dB

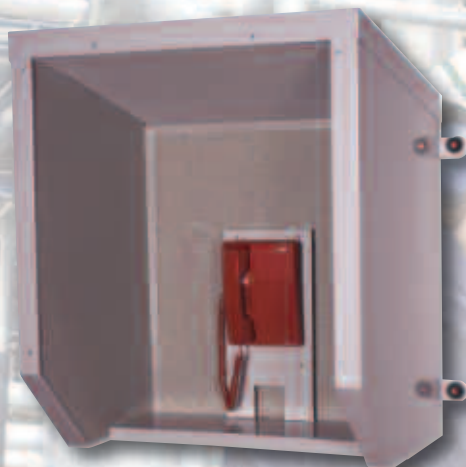
T4000 ZINTEC

PRODUCT INFO

In internal locations where high levels of noise are a problem, the T4000 is the ideal solution. The hood is manufactured to the same high standards as the T4000 Marine. It has the same acoustic qualities, but being made of mild steel instead of stainless steel, the unit cost is considerably lower.

DIMENSIONS

Dimensions:	H830mm x W710mm x D540mm (Excluding fixing brackets)
Colour:	Grey
Noise Reduction:	up to -23dB



T2000



PRODUCT INFO

This colourful all purpose telephone hood is both suitable for commercial locations where appearances are important or industrial premises to brighten up the working environment. The T2000 has been designed to fit above all types of wall mounted payphones. Smaller wall mounted payphones, or intercoms can be fixed into the 450mm high by 250mm wide flat area in the back of the hood.

The thermoset composite moulding is manufactured using the latest RTM MIT process, giving the T2000 considerable strength and resistance to impact. It is suitable for internal or external locations. Recent restyling has also included moulded-in handset graphics to the sides and a discrete flat area to the front which allows the fixing of screen printed graphics.

DIMENSIONS

Colours:	Blue, Red, Yellow, Grey
Dimensions:	H790mm W740mm D560mm
Noise Reduction:	up to -14dB

T5000

PRODUCT INFO

For external or internal use, the T5000 is designed to attain a high level of noise reduction up to 23dB. Manufactured using generalpurpose resin mat to BS476 Class 1 fire retardancy, the T5000 is extremely robust and weatherproof. Inside the hood's outer shell is a perforated polypropylene lining that houses 50mm non-hygroscopic acoustic insulation.

Fitted to the inner back wall is a stainless steel apparatus plate; beneath this plate is a GRP shelf (165mm deep) with easy cable entry. The hood is fixed to the wall via two **galvanised brackets** that are secured through the hood's back panel enabling a load of up to 60 kgs to be safely mounted.

DIMENSIONS

Colour:	Yellow - other colours to order
Dimensions:	H920mm W700mm D600mm (excluding brackets)
Noise Reduction:	up to -23dB



MARINE & HAZARDOUS AREAS

Oil/Gas production platforms, generator and pump rooms, chemical plants, docks, factories, mines.

T4000 MARINE



PRODUCT INFO

The T4000 Marine telephone hood has been designed for use in noisy areas in harsh environments. Manufactured from carefully selected materials, the hood is extremely robust.

The outer shell is stainless steel with a nylon powder coat paint finish, the inner perforated lining has the same paint finish, the 50mm cavity is filled with non-combustible, non-hygroscopic rock mineral wool insulation (density 60kg/m³).

A telephone mounting panel is located in the back of the hood, above the 200mm deep shelf. Cable access to the back of the mounting panel is via a 40mm square hole in the shelf.

The hood is mounted on four rubber anti-vibration fixings.

DIMENSIONS

Colour:	Yellow
Dimensions:	H830mm W710mm (excluding fixing brackets) D540mm
Noise Reduction:	up to -23dB

T5000 MARINE

PRODUCT INFO

For external or internal use, the T5000 Marine is designed to attain a high level of noise reduction up to 23dB. Manufactured using general-purpose resin mat to BS476 Class 1 fire retardancy, the T5000 Marine is extremely robust and weatherproof. Inside the hood's outer shell is a perforated polypropylene lining that houses 50mm nonhygroscopic acoustic insulation.

Fitted to the inner back wall is a stainless steel apparatus plate; beneath this plate is a GRP shelf (165mm deep) with easy cable entry. The hood is fixed to the wall via two **stainless steel brackets** that are secured through the hood's back panel enabling a load of up to 60 kgs to be safely mounted.

DIMENSIONS

Colour:	Yellow - other colours to order
Dimensions:	H920mm W700mm D600mm (excluding fixing brackets)
Noise Reduction:	up to -23dB



KIOSK



PRODUCT INFO

The GRP Telephone Kiosk is designed for extremely noisy internal or external installations and is suitable for harsh environments, providing a weatherproof and quieter telephone area.

Manufactured in glass reinforced plastic, the outward opening door has a polycarbonate glazed panel, is fitted with an automatic door closer and has a robust handle. A sloped roof prevents collection of moisture and rainwater. Internally the three sides of the kiosk are prelined with 50mm non-combustible, non-hygroscopic acoustic insulation (density 60kg per cubic metre). This is held in place by galvanised perforated panels. An acoustic slab is placed inside the roof cavity for further insulation. As standard, a telephone mounting panel is fitted to the inner back panel of the kiosk.

Supplied fully assembled, the kiosk can be made available for future dismantling making it possible to install where the fully assembled kiosk cannot fit, through a doorway for example.

Optional extras are lighting and carpeting. A double glazed window can also be fitted to the door upon request.

DIMENSIONS

Dimensions:	H2120mm W930mm D930mm
Standard Colour:	Any colour (made to order)
Noise Reduction:	up to -35dB

T2000 MARINE

PRODUCT INFO

The T2000 Marine telephone hood has been designed specifically for installations in hazardous or arduous areas and as such is extremely robust and environment proof. This is reflected in both its manner of construction and the materials used. Typical applications include the offshore and onshore petrochemical industries, the power and construction industries and many more. The hood is manufactured in two halves, using the latest RTM MIT process

The two halves are separate thermoset composite mouldings (BS476 Part 7 Class 1 Surface Spread of Flame) that are bonded together as well as being held with stainless steel rivets. This method of construction means that this model is particularly suitable for hostile marine environments. Telephones can be mounted in the 450mm high by 250mm wide flat area in the back of the hood.

DIMENSIONS

Colours:	Red, Yellow
Dimensions:	H790mm W740mm D580mm
Noise Reduction:	up to -14dB



GENERAL PURPOSE HOODS

For public buildings, schools, leisure centres, hotels, remand centres, information points. Provides privacy, attracts attention to the phone, easily cleaned, keeps installation tidy.

T800



PRODUCT INFO

The elegant T800 telephone hood has been designed to maximise user comfort and visual appeal in prestige locations. It is suitable for small wall or desk mounted payphones as well as standard telephone instruments. The transparent sides and top of the hood are formed from a single piece of 5mm thick tinted acrylic.

DIMENSIONS

Colour: Grey with tinted acrylic
Dimensions: H730mm W610mm D420mm Shelf W600 D290

T1000



PRODUCT INFO

Strikingly different in design to existing hoods, the T1000 has considerable visual impact. The onepiece thermoset composite moulding incorporates a back panel, shelf and roof. The curved polycarbonate sides add privacy and enhance the design. Phones or payphones can be shelf mounted, or secured to the wall through the back panel.

DIMENSIONS

Colour: Grey
Dimensions: H1000mm W680mm D300mm

T3000



PRODUCT INFO

The slim-line T3000 Telephone Acoustic Hood is the ideal solution for limited space locations, or where a larger full size hood is not required. It has been designed to fit over wall mounted payphones and has a cut out in the back panel 265mm wide by 140mm high. Manufactured in the same way as the T2000, the T3000 has the same strength and styling qualities, but in a more compact size.

DIMENSIONS

Colour: Blue, Red, Yellow, Grey
Dimensions: H790mm W740mm D360mm

T500



PRODUCT INFO

The T500 is a very tough acoustic enclosure designed for noisy areas, where space is limited. Manufactured from stainless steel and having a perforated internal lining, the 25mm cavity being filled with fire retardant acoustic foam.

The 242mm wide centre panel has a removable lower panel 220mm high which allows the hood to fit around smaller wall phones, or the phone can be mounted to the wall through this lower panel.

Supplied fully assembled with corner shelves and four wall brackets.

DIMENSIONS

Colour: Stainless Steel
Dimensions: H700mm W647mm D250mm

HIPPO TELEPHONE CABINETS

SMALL CABINET

PRODUCT INFO

This cabinet is ideally suited for installations in factories, offices, leisure centres and public buildings. The cabinet has an IP 65 weather rating and is therefore suitable for locations where the telephone has to be protected from water or dust. It is also suitable for use with emergency telephones.

DIMENSIONS

Colours: Red door, white handset & 'Telephone', Green door, white handset & 'Telephone', Black handset logo on light grey colour door.
Dimensions: H290mm W250mm D150mm

STEEL CABINET

PRODUCT INFO

Manufactured in mild steel with a stone colour powder coat paint finish. This cabinet offers a high level of security and can be locked with a padlock (supplied by user).

Suitable for internal or external installations having an IP66 weather rating.

DIMENSIONS

Colours: Red door, white handset & 'Telephone', Green door, white handset & 'Telephone', White door screen with Black handset logo.
Dimensions: H400mm W300mm D200mm



RM CABINET

PRODUCT INFO

Rotationally moulded in medium density polyethylene, the RM telephone cabinet is extremely robust and resilient to impact. Its door features a telephone handset logo and is made of a double wall construction for increased strength and rigidity.

A barrel lock is incorporated into the neatly recessed handle for security. Positioned on the inside back wall of the cabinet is a 280mm x 375mm board for securing telephone instruments. IP 55 rating. Post or wall mounting.

DIMENSIONS

Colours: Blue, Red, Yellow, Green, Orange
Dimensions: H420mm W330mm D265mm

SPECIAL ENVIRONMENT PHONES

Please contact our sales office or go to our website for full specifications of each phone.

COMMANDER



PRODUCT INFO

- Full keypad with memory, CB, 1, 3 and 6 button programmable autodialler telephones
- Robust and weather resistant to IP65
- Several mounting options
- Dual purpose design for wall or desk mounting, simple installation
- Industry standard robust handset c/w armoured cord
- DTMF/LD and earth/timed break recall
- Large tactile buttons, easy to see and operate
- CE compliant
- Optional S.M.A.R.T. variants

TITAN



PRODUCT INFO

- Full keypad or autodial options with remote programming
- Robust and weather resistant from IP54 to IP66
- Several mounting options
- Industry standard robust handset c/w armoured cord
- Non-volatile memory store
- DTMF/LD and ELR/TBR
- Large tactile buttons
- CE compliant
- Optional S.M.A.R.T. variants

AUTELDAC 4



PRODUCT INFO

- Full keypad with 3 programmable memory buttons, or CB telephone
- Group II Ex Telephone (R&TTE Directive 1999/5/EC and ATEX Product Directive 94/9/EX)
- Fully compliant with iCTR 37/ CTR 38
- BASEEFA certified
- Full keypad with 3 programmable memory buttons, and CB telephone variants
- Headset Options
- Integral ringer and secondary beacon / external sounder actuator
- Robust and Weather resistant
- Industry standard & robust handset c/w armoured or curly cord
- Dual purpose design for wall or desk mounting, simple installation
- BASEEFA certified
- CE compliant

GERONIMO



PRODUCT INFO

- Die-cast metal keypad
- Armoured handset cord
- Steel case - chrome plated
- Stainless steel faceplate
- Robust and weather resistant to IP65
- DTMF Dialling

AUSTRALIAWIDE PAYPHONES

P.O. Box 606, Rockdale, NSW, 2216
Telephone: 02-9599-9555 Fax: 02-9599-9225
Email: sales@australiawidepayphones.com.au
service@australiawidepayphones.com.au